

Kyoto City Higashiyama and Shimogyo Wards

River Flood Hazard Map



About the Kyoto City River Flood Hazard Map

The "Kyoto City River Flood Hazard Map" shows areas and expected flood depths if rivers in the city overflow during the heaviest predicted rainfall. It covers both major and smaller rivers.

The map helps residents prepare and take safe evacuation actions in case of river flooding.

How to Use the Kyoto City River Flood Hazard Map

- Know flood risks near you and your evacuation options.
- Learn how to get disaster information and what actions to take during a flood.
- Understand what preparations you can make in advance to stay safe.

Types of Rivers Covered by This Hazard Map

- Flood Forecast Rivers** These rivers may cause serious damage to people and the economy during floods. Flood forecasts are issued when there is heavy rain. In Kyoto City, the Uji, Katsura, Kizu, Kamogawa, and Takano Rivers are designated as flood forecast rivers.
- Rivers with Water Level Monitoring** These rivers are not designated flood forecasting rivers but may still cause serious damage during floods. During heavy rain, residents are notified if the water reaches the emergency warning level.
- Other Rivers** There are many smaller rivers besides the two types above. Flooding can occur even during short periods of heavy rain.

Inquiries about the Map
Kyoto City Administrative and Financial Affairs Bureau
Office of Disaster Risk Management Tel: 075-222-3210

Inquiries about Evacuation Sites
Higashiyama Ward Office, Community Empowerment Promotion (General Affairs / Disaster Management) Tel: 075-561-9105
Shimogyo Ward Office, Community Empowerment Promotion (General Affairs / Disaster Management) Tel: 075-371-7164

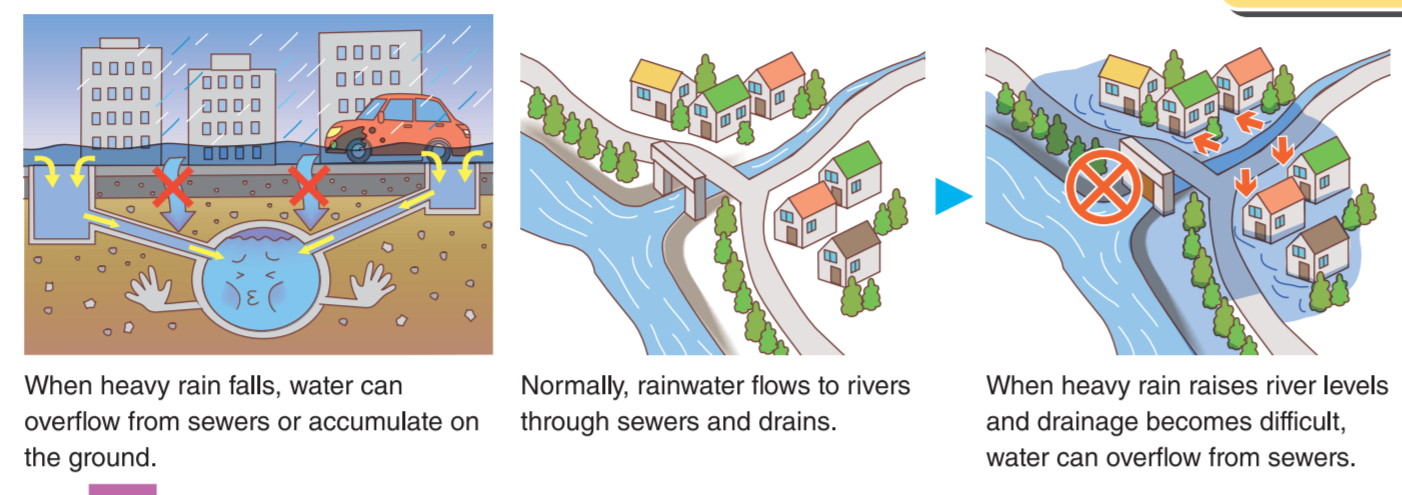
Issued : Month 6, 2026 / Kyoto City Administrative and Financial Affairs Bureau / Office of Disaster Risk Management
Kyoto City Printed Publication No. 0827-5

Learn about flood hazards

There are two types of flooding covered in this hazard map: "River flooding" and "Internal inundation". These two types of flooding occur in different places and have different causes. By understanding these two types of floods, you can prepare in advance and take the correct evacuation actions when flooding occurs.

How Internal Inundation Occurs

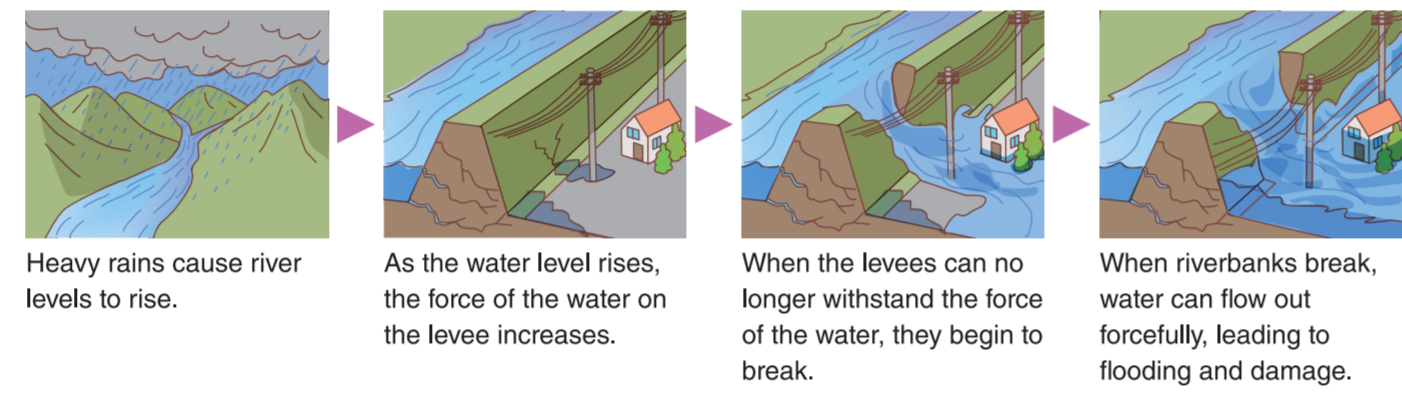
Internal inundation is a type of water-related disaster in which heavy rainfall causes water to overflow from sewer systems and flood surrounding areas. It is more likely to occur when **intense rain falls over a short period of time**. Areas near sewer facilities, **low-lying places such as underpasses, and underground spaces** are particularly prone to internal inundation.



If heavy rain continues, the risk of river flooding will increase.

How River Flooding Happens

River flooding occurs when heavy rain causes a river to overflow and water spreads outside the river, causing flooding in surrounding areas. Overflowing water can break riverbanks and cause serious damage, including homes being damaged or swept away.



When heavy rain continues, both internal inundation and river flooding may occur at the same time. In general, river flooding causes more severe flooding damage. **If you evacuate based only on internal inundation, you may not be able to evacuate safely when river flooding occurs.** In addition, heavy rain increases the risk of landslide disasters. Please also pay attention to landslide disaster warning zones around you and along your evacuation routes.

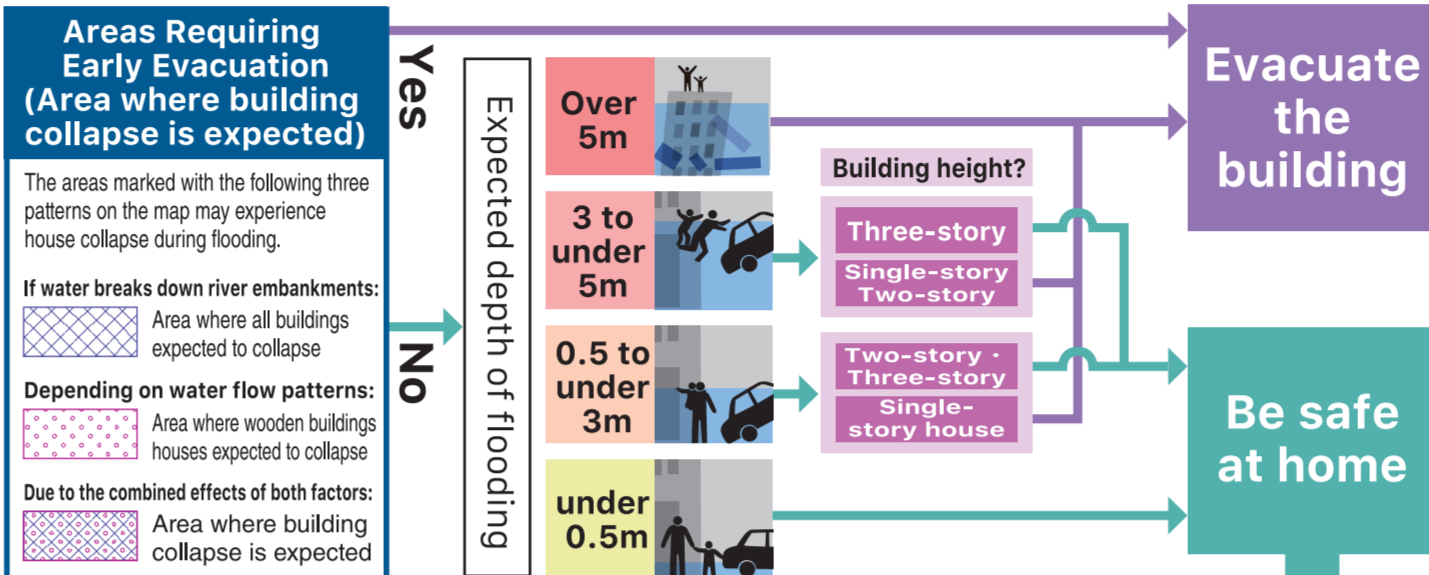
Check Flood Risks and Evacuation Actions

Check Flood Risks and Evacuation Sites

- Check expected flood depths and proper evacuation actions in your area using this hazard map.
- Check safe evacuation sites and the routes from your home. Knowing several evacuation sites, not just one, increases your safety during evacuation.
- Depending on flood conditions, the evacuation information issued by the city and the evacuation shelters that are opened may differ. Confirm the situation on the city website before evacuating.

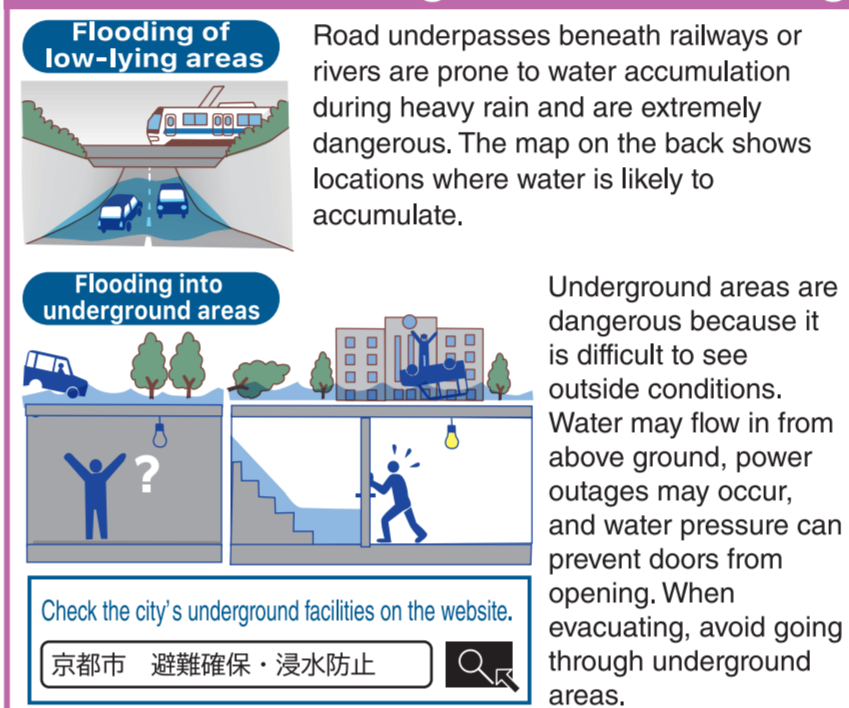
Confirm Appropriate Evacuation Actions

Appropriate evacuation actions vary depending on the expected depth of flooding and the location and height of the building. Learn the proper evacuation actions that suit you.

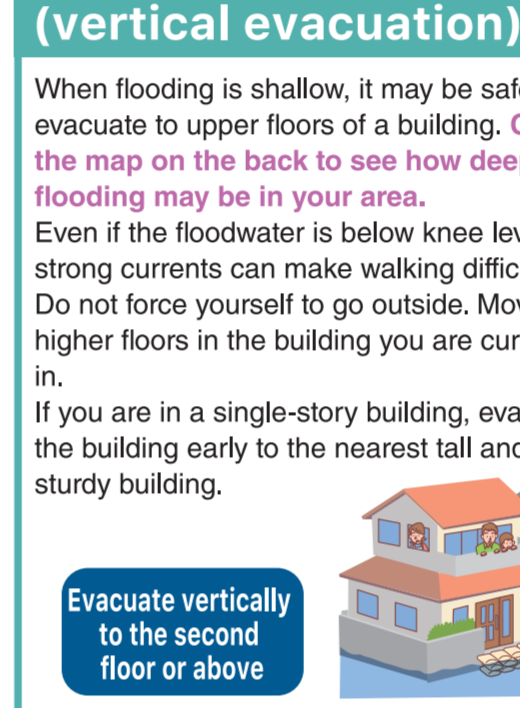


※Please check the areas at risk of house collapse on the map on the reverse side.

Avoid areas at high risk of flooding



Be safe at home (vertical evacuation)



Confirm your evacuation location

- Check the map on the back to locate nearby evacuation sites and areas safe from flooding.
- Before flooding occurs, evacuate to city-designated evacuation sites, safe areas that won't flood, or nearby tall buildings.
- Before evacuating building, be aware that internal inundation might have already started. Use the internal inundation hazard map to plan a safe evacuation route.

Your School District Emergency Evacuation Site



Places considered safe, such as friends' or relatives' homes in low-risk flood and landslide areas



Please check the status of evacuation site openings on the City's official website and other sources. →See [Disaster and Weather Information] for reference.

Make a note of where you will evacuate

Emergency evacuation sites in your residential school district

○ ○ Elementary School
Places considered safe, such as friends' or relatives' homes in low-risk flood and landslide areas.

Fill-in space

Things to keep in mind for safe evacuation

- Evacuate before flooding starts**
Evacuate Early!
- Stay Away from Rivers and Bridges!**
- Watch out for Drains and Manholes!**
- Do not evacuate by car!**
- Help Elderly and Disabled Evacuate!**
- Don't Evacuate Alone, Call Out to Others!**
- Evacuate in easy-to-move clothing!**
● Gather your things and keep one hand free.
● No rubber boots allowed!
● Check your footing with a cane or umbrella!

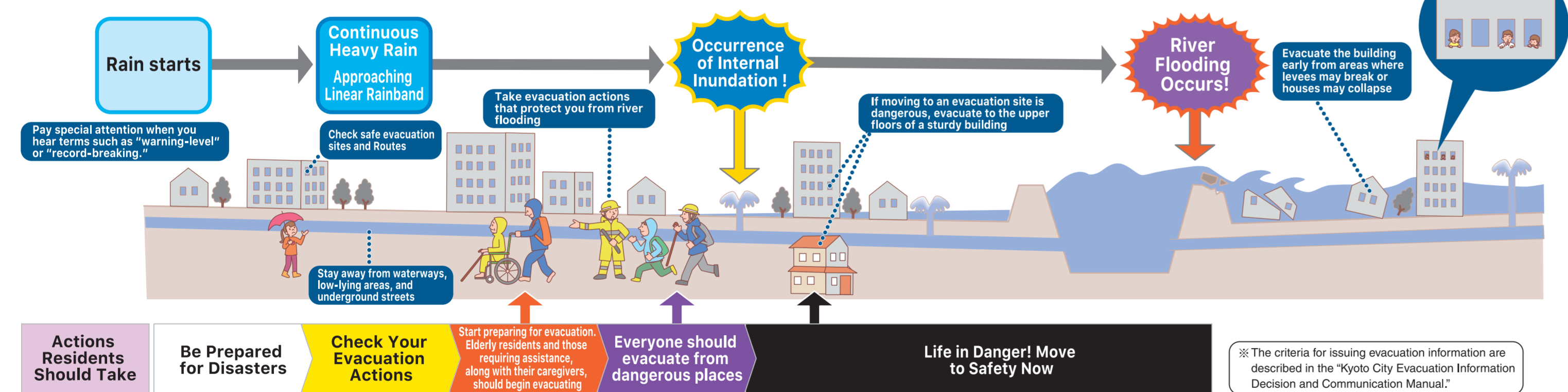
Evacuation Information and Actions Residents Should Take

Evacuation alerts will be issued for areas at high risk of river flooding. People in these areas should evacuate early. Sometimes, alerts may not be issued during sudden heavy rain or landslide disasters. Even if no evacuation information has been issued, if you feel that the rainfall is different from usual, take early action to protect your safety.

Also, please note that evacuation information may not always be issued in the order of warning levels. If you just wait for information or instructions, the situation can worsen before you realize it, making it too late to evacuate. Pay attention to weather reports, news, and the situation around you, and try to take action on your own.

Alert Level	Level 1	Level 2	Level 3	Level 4	Level 5
Situation	Weather May Get Worse	Worsening Weather	Disaster May Occur	High Risk of Disaster	Disaster Occurring or Imminent
Information to Check	Weather Forecast Rain Cloud Movement Early Alert	Heavy Rain Advisory Flood Advisory (Flood Advisory Information)	Heavy Rain Warning Flood Warning (Flood Warning Information) Evacuation for Elderly and Other Vulnerable People	Heavy Rain Urgent Warning Flood Urgent Warning (Flood Urgent Information) Evacuation Order	Heavy Rain Emergency Alert Flood Emergency Alert Emergency Safety Measures

"Flood Advisory" [Designated Flood Forecast Rivers] and "Flood Advisory Information" [Designated Water Level Notification Rivers] are issued when the water level reaches the Flood Advisory Level.
"Flood Warning" [same as above] and "Flood Alert Information" [same as above] are issued when the water level reaches (or is expected to reach) the Evacuation Decision Level.
"Severe Flood Warning" [same as above] and "Severe Flood Information" [same as above] are issued when the water level reaches (or is expected to reach) the Severe Flood Level.



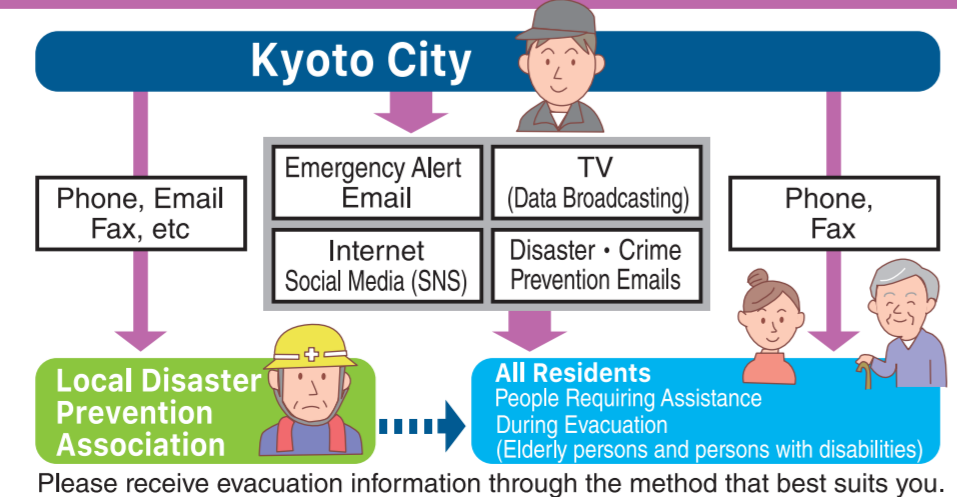
Create Your "My Timeline"

A "My Timeline" is a plan you make in advance about what you will do during a disaster.

- Making a "My Timeline" for unexpected floods helps you evacuate safely and protect yourself and your family.
- Go to the Kyoto City website and make your My Timeline!



How Evacuation Information Reaches You



If You Can't Get to the Evacuation Site



Check Disaster prevention and Weather Information

Disaster prevention and weather information is provided by local authorities. This information can be received automatically (push type) or checked by yourself (pull type). Check how to gather information appropriate for the situation.

Receive information (push type)

Emergency Alert Email
Disaster prevention information will be delivered to your mobile phone.

Disaster and Crime Prevention Information Email
(Kyoto Prefecture)
We will send disaster prevention information and other alerts by email. Prior registration is required to use it.

Look up yourself (pull type)

Kyoto City Disaster Prevention Portal site
In addition to hazard maps and disaster prevention information, you can also access useful everyday information.

Kyoto City Disaster Prevention Portal site
This is an X (Former Twitter) account. Follow to receive disaster prevention information.

Kyoto Prefecture River Disaster Prevention Information
You can check river water levels, rainfall, and flood forecasts for Kyoto Prefecture. River camera footage is also available.

Kyoto City Disaster & Weather Info (JMA)
Check Kyoto City warnings, rain cloud movement, and rainfall.

Flood KIKIKURU (JMA)
You can see the risk of flooding during heavy rain.

Watch TV and listen to the radio
Press the "d" button on your TV to view disaster and weather information.

Enhance the safety of evacuation actions through information gathering

Internal inundation and small river floods caused by heavy rain, such as concentrated downpours from linear rainbands, which are difficult to predict accurately, are becoming more frequent. Check the latest situation using KIKIKURU, rain cloud radar, and river cameras, and evacuate immediately if you think it is dangerous (For flooding, please check Flood KIKIKURU).

Flooding
Flood Risk Distribution (KIKIKURU)

Flooding Damage
Inundation Risk Distribution (KIKIKURU)

Landslide Disaster
Landslide Risk Distribution (KIKIKURU)

You can check the location of linear rainbands using the rain cloud radar.

River cameras allow you to check the conditions of not only large rivers but also small rivers.

Be prepared in advance

Check Your Emergency Kit and Supplies

- Keep evacuation items ready in advance for quick access.
- Choose only what you need and pack it all in a single backpack.
- Prepare for home evacuation: keep extra food and water and regularly use and restock them so they are available whenever needed.



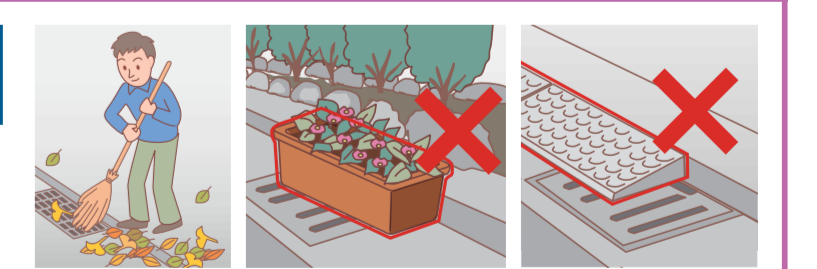
General Shopping List	Individual Shopping List	Disaster Grab-and-Go Items List
<input type="checkbox"/> Drinking Water (including water for cooking, 3 liters per person per day is recommended)	<input type="checkbox"/> Portable Toilet (Cooport, etc.)	<input type="checkbox"/> Food (for ... days)
<input type="checkbox"/> Staple Food (rice, bread, instant noodles, etc.)	<input type="checkbox"/> Spare suction tube	<input type="checkbox"/> Spare suction tube
<input type="checkbox"/> Main Dish (instant pouch foods, canned foods, etc.)	<input type="checkbox"/> Disposable gloves	<input type="checkbox"/> Disposable gloves
<input type="checkbox"/> First Aid Kit (band-aids, ointment, bandaging, etc.)	<input type="checkbox"/> Alcohol wipes	<input type="checkbox"/> Alcohol wipes
<input type="checkbox"/> Other Items (Sweets, chocolate, biscuits, candies, etc.)	<input type="checkbox"/> Wet towel	<input type="checkbox"/> Wet towel
<input type="checkbox"/> Regular Medications	<input type="checkbox"/> Dry shampoo	<input type="checkbox"/> Dry shampoo
<input type="checkbox"/> Nutritional Supplements	<input type="checkbox"/> Mobile Phone Charger	<input type="checkbox"/> Mobile Phone Charger
<input type="checkbox"/> Generator		

※ This list shows general examples. Prepare the supplies you need and decide what to take during a disaster.
※ Keep at least three days' worth of food, and if possible, enough for a week.
※ Keep your disaster items ready in a backpack for quick evacuation.

Prepare for Flooding

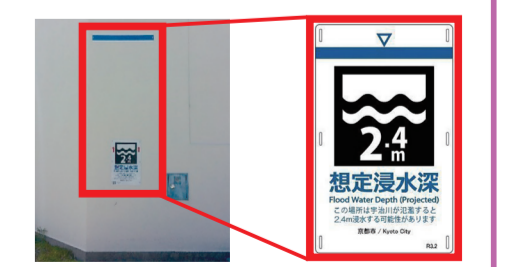
Prevent Damage with Simple Actions Around You

Keep drains and gutters clean to prevent them from clogging with trash and leaves. Do not place objects such as blocks on top of drain or gutter covers.



Look for the "Marugoto Machigoto Hazard Map"

The "Marugoto Machigoto Hazard Map" consists of signs installed on utility poles and buildings that show how high floodwater may reach. Try to find them when you are walking around the town. You can also view on the hazard map online.



Participate in Evacuation Drills

In Kyoto City, the city government and residents conduct disaster drills together. Join the drills to increase your disaster preparedness.

Help Each Other in the Community (Mutual Aid)

Check on and help elderly people, those with disabilities, families with young children, pregnant individuals, and foreigners in your community.